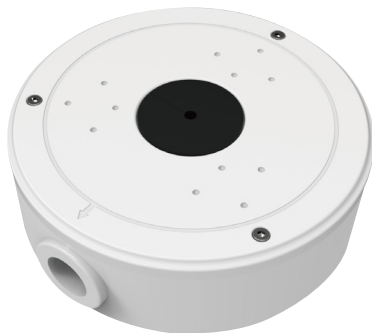


GB01 | Camera Junction Box



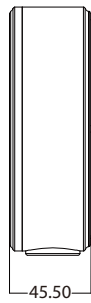
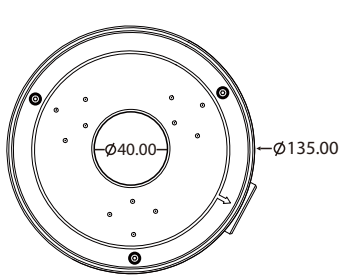
Features

- Neat Design Camera Junction Box
- Universal Structure to fit in multiple ZKTeco private Camera Casing
- Ingress Protection IP66
- Cast aluminium alloy Material

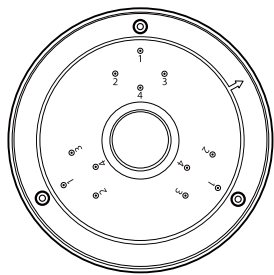
Specifications

Model	GB01
Description	Camera Junction Box
Material	Cast aluminium alloy
Dimension	Φ135mm*45.5mm
Pipe Thread	G1/2"
Weight	0.45KG
Load Bearing	3.0KG
Color	White
Protection	IP66
Fitting Camera Casing Type	ES-H, BS-K, BS-B, BL-L, EL-I

Dimensions (mm)



Matching Camera Casing Type



Number	Casing Code	Casing Photo
1	ES-H	
2	BL-L	
3	EL-I	
4	BS-K BS-B	