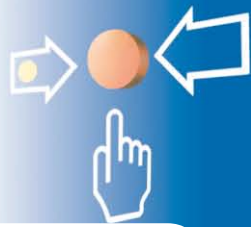


# Conventional RF-Expander FI720/RF/CWE



- **Connection via conventional detector line or independent operation**
- **Up to 32 detectors, modules or signalling devices can be controlled**
- **Configuration through PC software**
- **Range of RF transmission max. 200m, more than 3km with RF Expanders**
- **Two orthogonal antennas for safe radio communication**



## Description

The RF interface FI720/RF/CWE serves as a gateway between radio devices Series FI720/RF or Series FI700/RF and a fire detection control panel. The integrated relay is intended for transmitting the alarm via a conventional detector line. This allows connection to control panels of any manufacturer. Alternatively, an independent RF fire detection system without a link to a fire detection control panel can also be realised.

The RF interface can communicate with up to 32 automatic detectors Series FI720/RF or manual call points, modules, sounders or strobes Series FI700/RF. The device addresses are set by means of the PC software

WireEx. In addition to the parameterisation of the RF system, this program also allows the analysis and graphical depiction of signal strength and transmission quality.

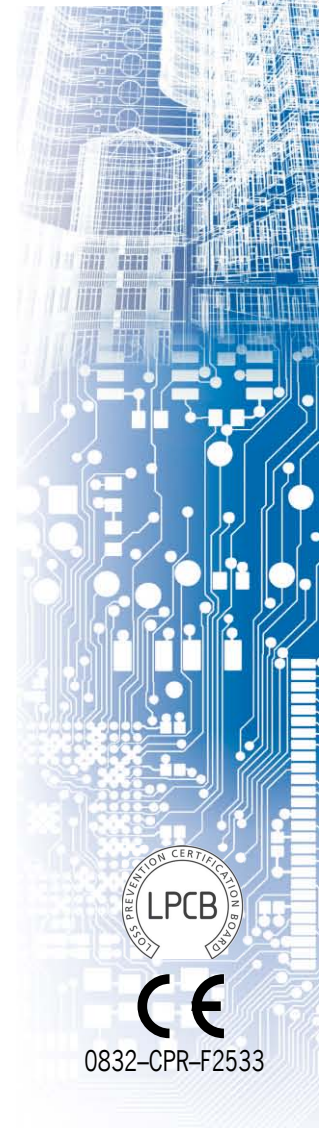
The range of up to 200m can be increased to more than 3km by using RF expanders. The RF interface can be linked with a maximum of 15 RF expanders. In this way, a hierarchical RF system with up to 6 levels can be created.

A fault of an RF component is indicated by a flashing light emitting diode.

## Specifications

Operating voltage	9 - 29VDC
Current consumption at 24V	typ. 30mA (quiescent)
Range of radio transmission (in free air)	max. 200m (to detectors/modules) max. 600m (to RF expanders)
Frequency band	868MHz
Ambient temperature	-30°C to +50°C
Protection class	IP51
Dimensions W x H x D	120 x 160 x 50 (mm, without antennas)
Colour	white
Weight	350g
Approvals	LPCB 928r/01 0832-CPR-F2533
Order number	249311
Order name	RF-Expander Conventional/720 FI720/RF/CWE

*Building Safety. Building Security.*



0832-CPR-F2533

